

# Core Ontology and Extensions

## General Concept

Albert-Ludwigs-Universität Freiburg



**UNI  
FREIBURG**

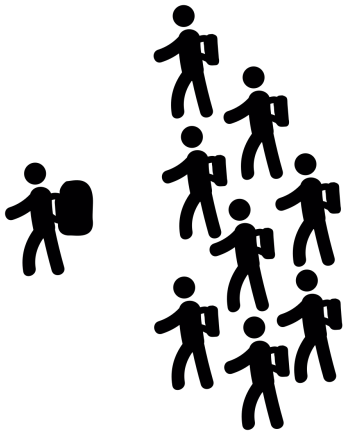
Felix Engel

Physical Anthropology Freiburg

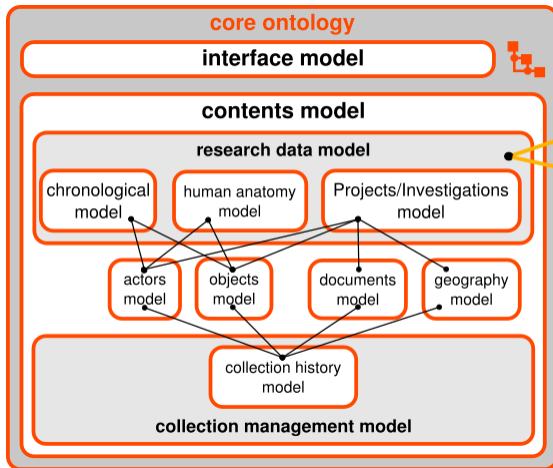
Workshop »Digital Standards for Research Data from Human Skeletal Collections«,  
08.09.2016

Extending the core ontology

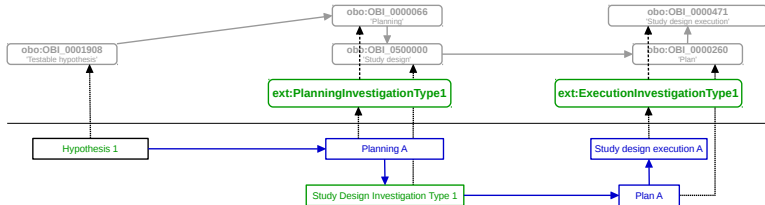
How extensions work

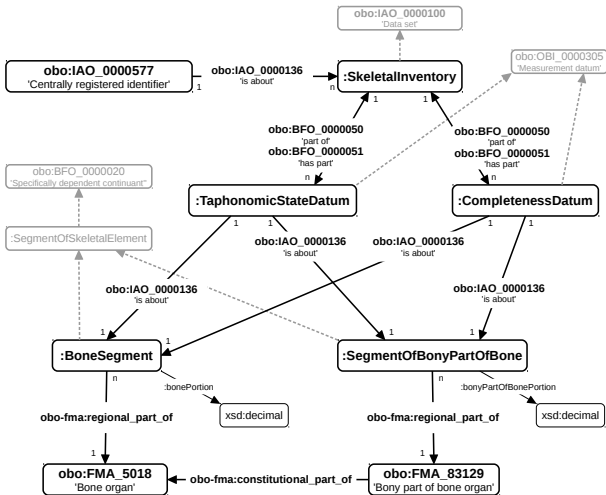


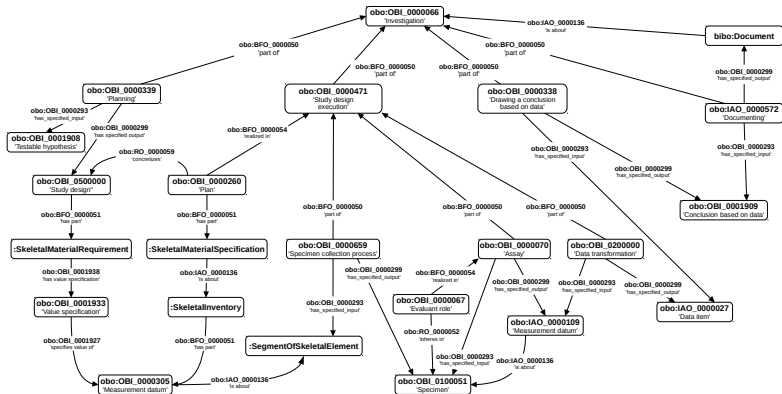
# Core Ontology and Extensions

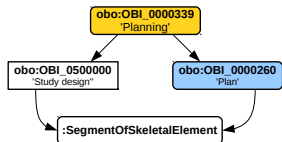


# Extension Subclasses and Instances

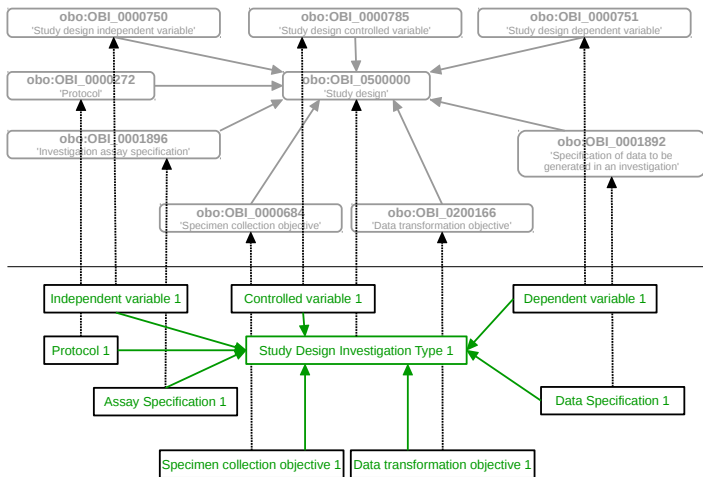


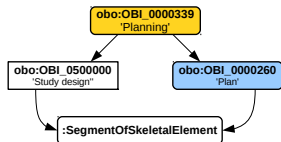






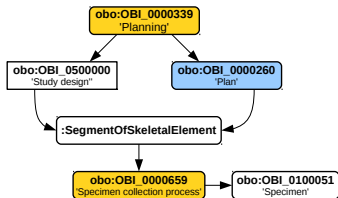


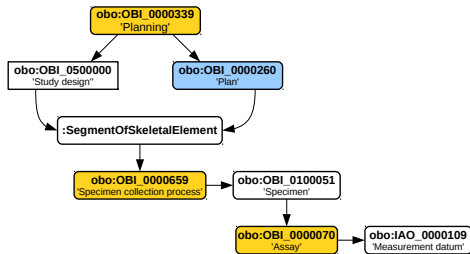


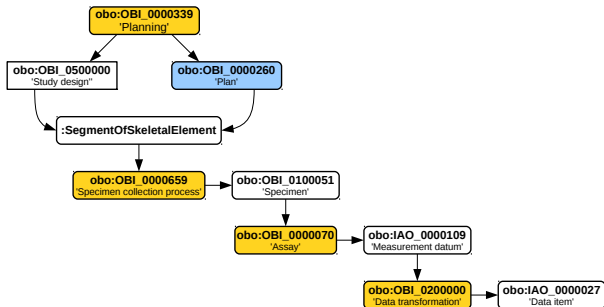


# Chain of Processes

## Specimen Collection

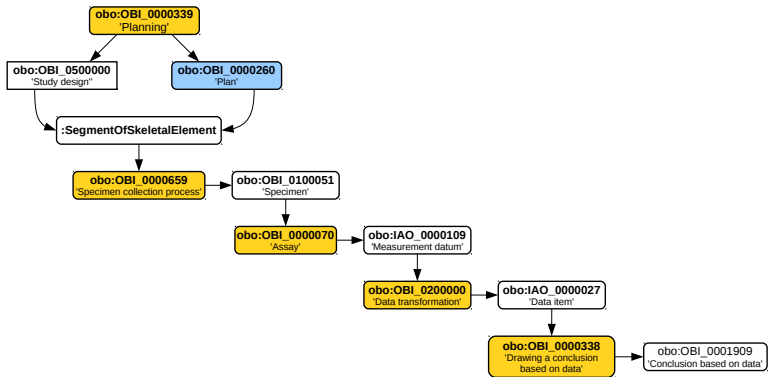




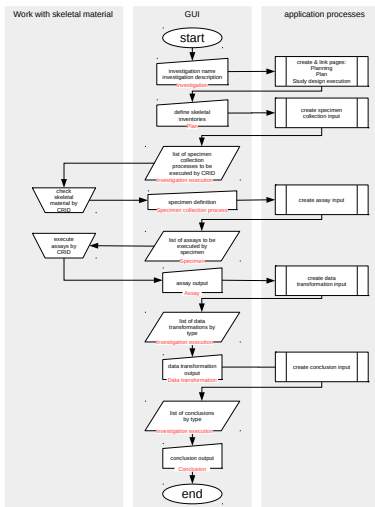


# Chain of Processes

## Drawing conclusions



# Investigations Workflow



# Investigations Workflow

